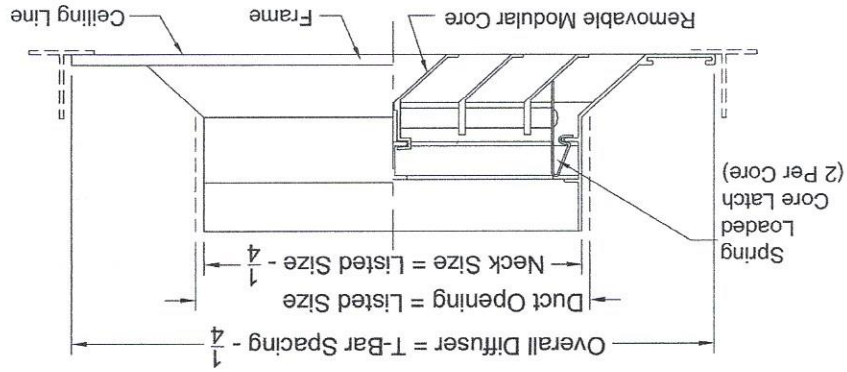
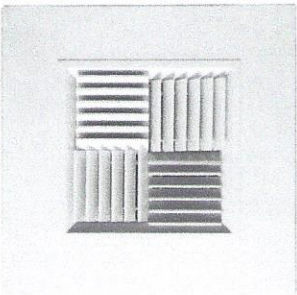




Model MCD-3

Modular Core Lay-in-T-Bar

All Aluminum Frame • Aluminum Core • Steel Panel



Features:

- Modular cores are removable to accommodate 1-way, 2-way, 3-way and 4-way throw patterns.
- Unique spring clip "clicks" into place to ensure positive attachment of cores
- Square neck sizes 6" x 6" to 20" x 20" in 2" increments available
- Extruded aluminum frame and cores
- Steel filler panel fits standard 24" x 24" T-bar
- Damper optional
- White paint standard

Modular Core Adjustments



Available Duct Sizes

6" x 6" through 20" x 20"
in 2" increments

Dimensions in inches:

Submittal No. _____ Date: _____